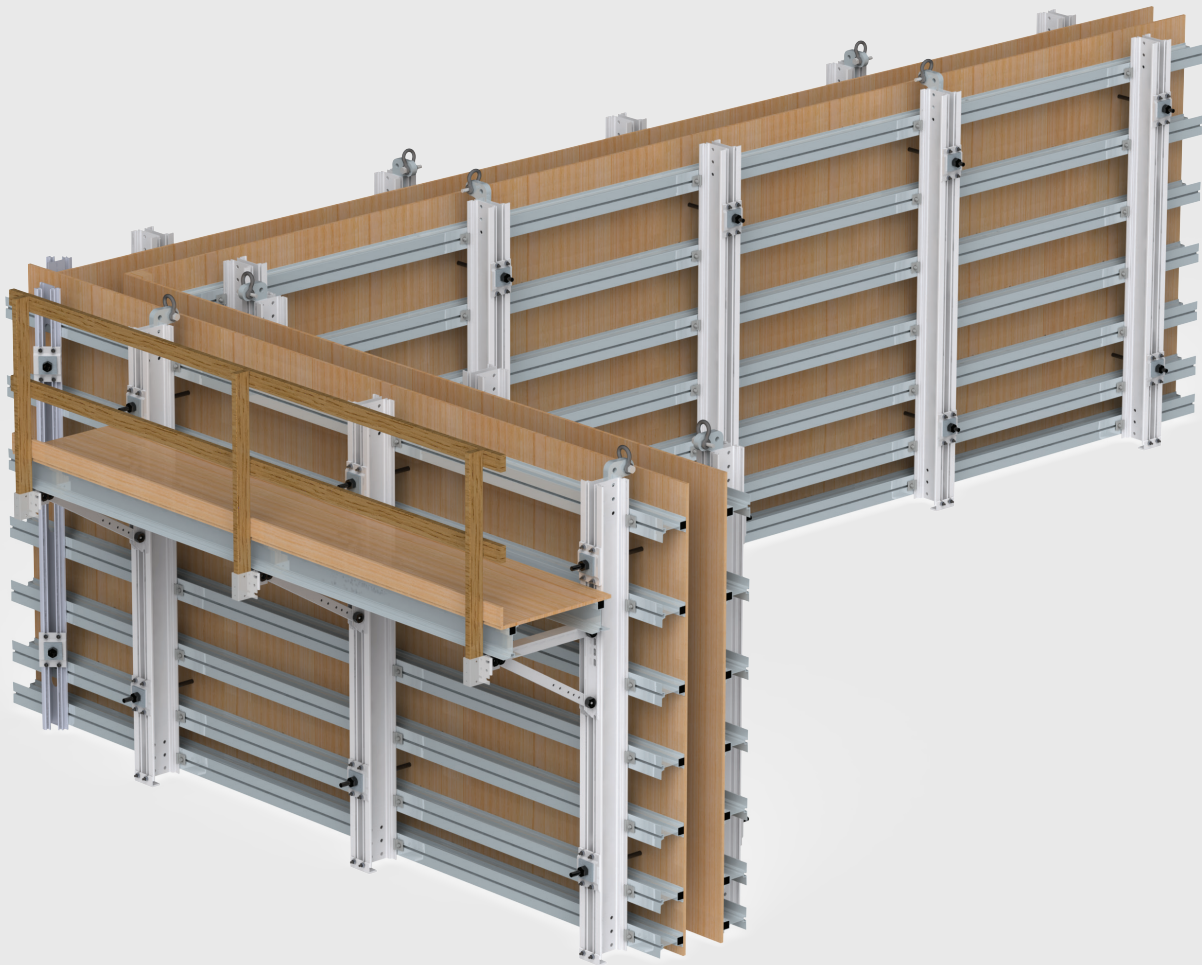


# ALUMA GANG<sup>®</sup>

The Most Versatile Wall Form System for all Applications.



At Work For You™



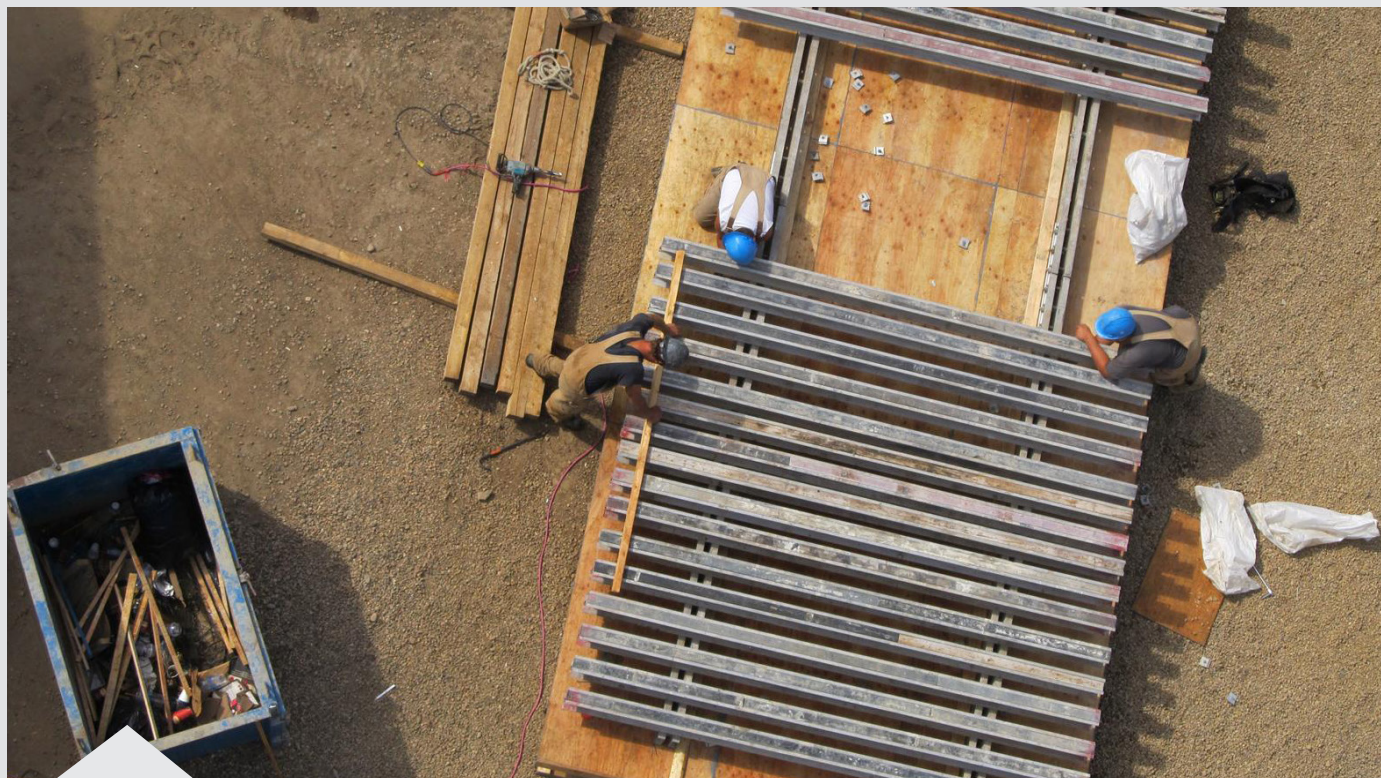
At Work  
For You™

## The Most Versatile Forming System

Depending upon ties and the spacing of the joists and walers, Aluma Gang® have been designed and used in various applications as the gang is limited only by the capacity of your crane, while attaching any facing to get the architectural finish you need.



# ALUMA GANG®



Aluma Ganged Wall Form System combines the unique features and versatility of our Aluma Beams® with the unequaled strength of the aluminum 55K Strongback. Using a full range of proven accessories, this system can be used for all wall form configurations while maximizing labor savings through the use of lightweight aluminum.

## Product Benefits

### ALUMA GANG®

Combines the versatility of Aluma Beam with the unequaled strength of the aluminum 55K Strongback

Can be used for all wall form configurations while maximizing labor savings

Made of lightweight, high strength aluminum

Quick and easy assembly

Flexibility on wall configurations and tie location

High strength / low maintenance, delivers to job-site

Can be re-assembled into other configurations

Can be pre-assembled on or off site for efficient and productive site logistics

# ALUMA GANG<sup>®</sup>

## Key Features

### Wall Forming

Basic to the wall form is the Aluma Beam<sup>®</sup>. This lightweight, high strength aluminum component provides a wall form weighing only 8.5 lb. / sq.ft. (41.5kg/m<sup>2</sup>), including plywood. Because it is so light, the Aluma Wall Form is quick and easy to assemble, simple to handle, and any size form can be provided since the system can be assembled in any length or height required, using standard length Aluma Beam<sup>®</sup> and spliced Strongbacks.

Using a spreader bar and lifting lugs, you can strip, fly, and re-set both sides of the wall simultaneously. The spreader bar maintains sufficient distance on re-setting to permit installation of reinforcing steel prior to closing up.

Tie locations are completely flexible and can be inserted at any location throughout the length of the Strongback.

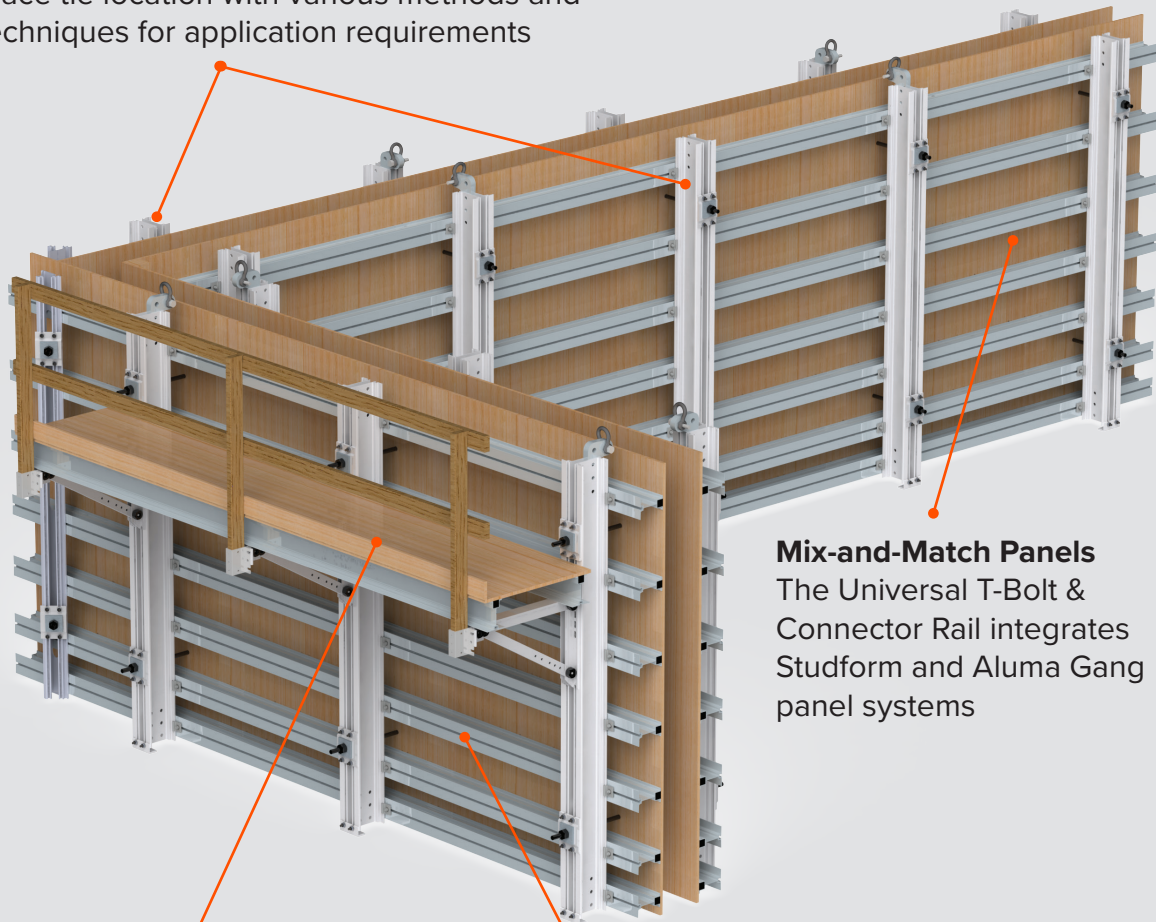
The Aluma Beam<sup>®</sup> can be used horizontally with a vertical waler. This makes the Aluma Wall Form System completely adaptable to a variety of wall configurations such as T-walls, shafts, and circular walls.

The bolt slot in the bottom flange of the Aluma Beam<sup>®</sup> is repeated into the flanges of the Strongback so that external accessories can be attached easily. These may include catwalk brackets, plumbing, and wind braces, etc. There is simply no other wall system available with the versatility offered by Aluma Systems.

The Ganged Wall Form conforms to all forming regulations, including CSA, CAL-OSHA and ANSI.

**Flexibility of Configuration**

Place tie location with various methods and techniques for application requirements

**Mix-and-Match Panels**

The Universal T-Bolt & Connector Rail integrates Studform and Aluma Gang panel systems

**Accessories**

Brackets to Guardrails, this system has many solutions to enhance productivity and utilization

**Pre-Assemble & Relocate**

Large sections built (on or off site) can easily be relocated, reducing time and labor costs

Complete customization for any flat application that is simple and effective.

# ALUMA GANG<sup>®</sup>

## Technical Data

Product Description	Wall Formwork
Overall	Aluma Gang <sup>®</sup> have been designed and used in applications requiring in excess of 3000 psf with a 2:1 factor of safety and L/360 deflection.
Strongback Waler Lengths (ft)	8.5   9   12.5   16
Secondary Beam Lengths (ft)	6 - 21
Form Area	Custom as required
Form lining type	Various architectural and commodity ply options
Form weight	10lbs sq/ft
Relevant Standards	Meets ANSI A10.9, CAN/CSA S269.3-M92
Corrosion protection	Main components are aluminum
Max. Concrete pressure	As required
Standard Connections	A-Clamp
Special features	<ul style="list-style-type: none"> <li>• Large list of accessories</li> <li>• Universal T-Bolt &amp; Connector Rail can integrate Aluma Gang with other Aluma panel systems</li> </ul>

### ▶ Aluma Beam<sup>®</sup> Integrates with:

- Logik 360/60 through connector rail

### ▶ Application & Use

- Architectural finishes achieved by various ply options available
- Vertical, climbing formwork applications
- Single sided forms
- Commercial Applications
- Industrial Applications
- Infrastructure Applications