

ALUMA GARAGE BEAM[®]

This system combines core Aluma standard products into a system that is ideal for heavy applications and adjustable to any beam shape.



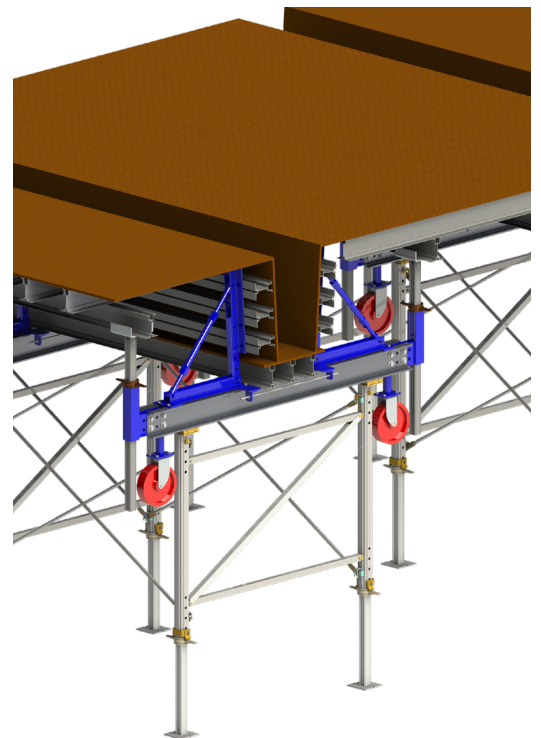
At Work For You™



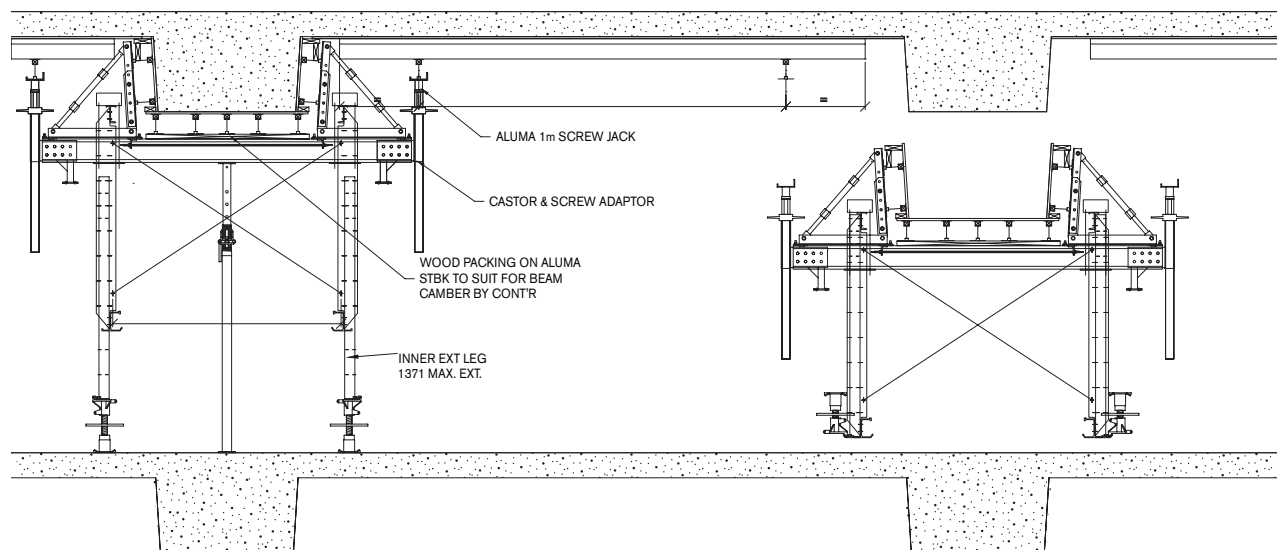
At Work
For You™

Flexible

The Aluma Frame Parking Garage System converts the Aluma Frame® or Aluma Truss® into a ledger bearing frame. With this configuration, both beam and slabs can be supported from a single table reducing the amount of equipment and labor required.



ALUMA GARAGE BEAM®



Platform decks can be fixed onto ledger frames

Product Benefits

ALUMA GARAGE BEAM®

Highly flexible, works with all Aluma jacks and casters

Beam widths, depths and draft angle are fully adjustable

Long beam assemblies can be moved on job sites easily

ALUMA GARAGE BEAM[®]

Technical Data

Product Description	Aluminum Beam Formwork
Beam Width (in)	up to 33.5 in
Beam Depth (in)	24.5 - 48 in
Beam Draft Angle	Fully adjustable
Horizontal Load Capacity	6.3 Kips per side
Collapsed Height	77 in minimum
Relevant Standards	Meets ANSI A10.9, CAN/CSA S269.1
Special Features	<ul style="list-style-type: none">• Hinge frame mounting connectors• Integrated jack and caster supports• Fully adjustable to create any beam shape

▶ ALUMA GARAGE BEAM[®] Integrates with:

- ProShore / ProDeck through adapter plate
- Aluma Truss through hopper & wedge connector
- Dual Beam direct with standard hardware

▶ Application & Use

- Concrete beams
- Commercial Applications
- Industrial Applications
- Infrastructure Applications