

# New Pier J at Frankfurt Airport

## Frankfurt/Main

After the completion of Pier H (also with Hünnebeck involvement) the expansion of Frankfurt Airport goes on with the next major construction site: New Pier J is created out of around 60,000 m<sup>3</sup> in-situ concrete and more than 4,500 prefabricated parts.

The 600 m long above-ground structure with 27,800 m<sup>2</sup> of floor space has four full storeys and two service storeys. Hünnebeck has delivered a solution with ST 60 shoring towers, the manually operated TOPEC modular slab formwork, the crane-dependent MANTO wall frame formwork and various special formwork to this project.

A sophisticated formwork and implementation concept, which makes optimal use of the available crane capacities, creates the preconditions for a safe and economical shell construction of the approximately 80,000 m<sup>2</sup> wall area and 30,000 m<sup>2</sup> slab area.

One third of the slab areas to be constructed are over 10 m high. In these high areas of cantilevered slabs ST 60 shoring towers were used as formwork support.

Thanks to the high load-bearing capacity of the ST 60 system (up to 240 kN load-bearing capacity per shoring tower/60 kN per leg), the construction site can manage with comparatively few towers at relatively large distances for slab support. This saves time, material and provides space for the Y-shaped prefabricated supports.

**Sector:** Infrastructure

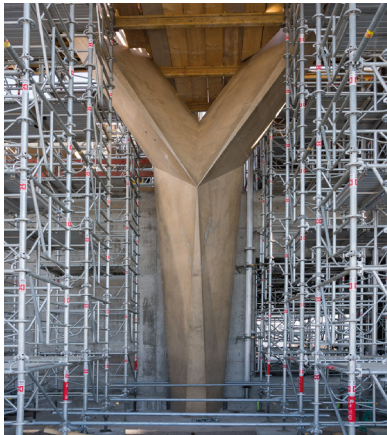
**Contractor:** Fraport AG

**Customer:** Anton Schick GmbH + Co.KG

**Project location:** Frankfurt/Main

**Material:** ST 60, TOPEC, MANTO, special formwork solutions

**Challenge:** construction during ongoing flight operations, fair faced concrete



### ► Contact

Phone +49 2102 9370

E-Mail [info\\_de@huennebeck.com](mailto:info_de@huennebeck.com)

# HÜNNEBECK

BY BRAND SAFWAY