

When things get tight: ST 60 towers

Paris-Orly Airport

Totally 340 shoring towers up to 21 m high, made of the innovative ST 60 support scaffold system can be found everywhere on the huge construction site of Orly Airport in Paris. They ensure the economical and safe erection or dismantling of slab formwork in the various working levels above and below ground.

No storage space on site, cramped conditions at the various operational sites and enormous time pressure... These are the challenging conditions of the airport construction site.

Due to a complicated logistical situation, the material is only dismantled and moved if it can be reassembled immediately afterwards. The advantage in doing so: For all frame sizes, only one stacking rack is required, on which the frames lie in a secured position ready for safe transport.

The advancing side protection and the patented board transfer solution ensure a high level of occupational safety even in cramped conditions.

The ST 60 towers used in Orly are up to 21 m high and carry slab formwork made of aluminium and wooden formwork beams. Depending on the load application, the shoring towers are interconnected to form various high-performance load-bearing structures.

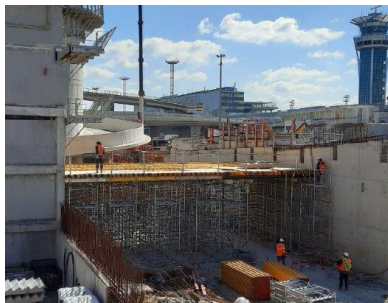
Sector: Infrastructure

Client: ARGE Demathieu & Bard, Gegnepark, Léon Grosse, Sefi-Intrafor

Project location: Paris-Orly

Material: ST 60 support scaffold

Challenge: no storage place, cramped conditions, enormous time pressure



► **Contact**

Phone +49 2102 9370

E-Mail info_de@huennebeck.com

HÜNNEBECK 

BY BRAND) SAFWAY