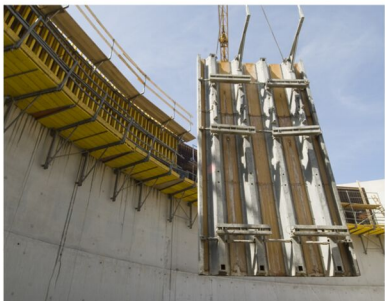


Sewage plant Plattling

Because of the huge circular and rectangular tanks, channels, funnels and other water-carrying components involved, the construction of a waste water treatment plant is always a major challenge for formwork engineers. Custom forms are called for in many areas. However, if the project is skillfully planned, this doesn't have to push up the cost of construction.



For the construction of the waste water treatment plant for a paper mill in Plattling, Lower Bavaria, the contractor Berger Bau GmbH from Passau entrusted the development, production and supply of all the requirement formwork elements to formwork supplier Hünnebeck.

The Hünnebeck branch in Riedlingen produced 35 detailed formwork plans for the treatment plant. The precise quantities of all forms kept available on site were defined in advance, and these – in consultation with the project managers – were supplied as required just in time. Overall,

Berger Bau had to build six types of tanks for primary treatment, secondary treatment, sludge activation, flotation, fresh water and sedimentation. Five of the water tanks have diameters of 11.5 to almost 47 meters, while one is rectangular and a maximum of 12 meters tall.

Area of expertise: Energy and Industry

Contractor: MD Papter GmbH & Co. KG

Client: Berger Bau GmbH, Passau

Project location: Plattling, at the Isar

Material: MANTO®, RONDA®, H20 timber beam formwork, Folding scaffold, Special formwork made of wooden support elements with tongue and groove forming skin

