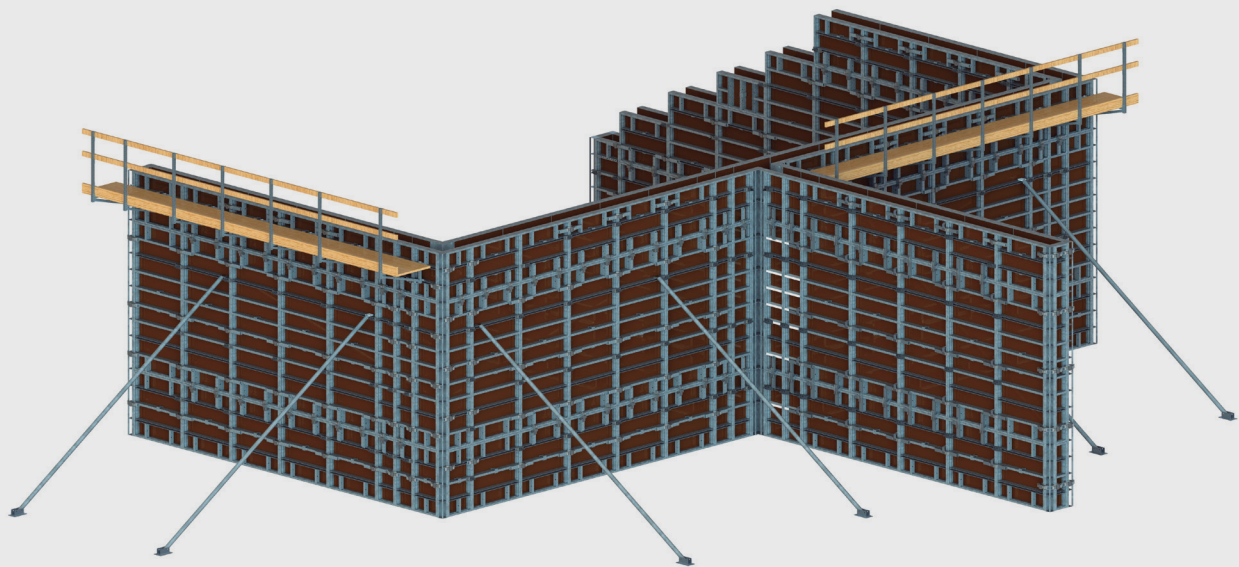


LOGIK[®] 60

LOGIK[®] 60 is the cost-effective, galvanized wall form system that utilizes only 3 main components



At Work For You™



At Work
For You™

Suited for Efficiency

LOGIK® 60 is a heavy duty steel-frame, plywood-faced modular crane set forming system that needs no walers, nuts or bolts and has minimal clamping requirements.

The panel withstands concrete pressures of up to 1670psf. One hammer blow and the LOGIK clamp aligns, levels and locks the adjacent form panels to provide a fast, simple and solid connection.



LOGIK[®] 60



Highly flexible with range of panel sizes and components, making the system ideal for a variety of situations encountered

Product Benefits

LOGIK[®] 60

Simple - only 3 main components: panels, clamps and ties.

Quick – installs fast: unique clamping action eliminates stiffening components. Large area panels mean fewer pieces to handle.

Symmetrical panels – can be used either vertically or horizontally to form any height.

Fewer ties required compared to other crane set systems.

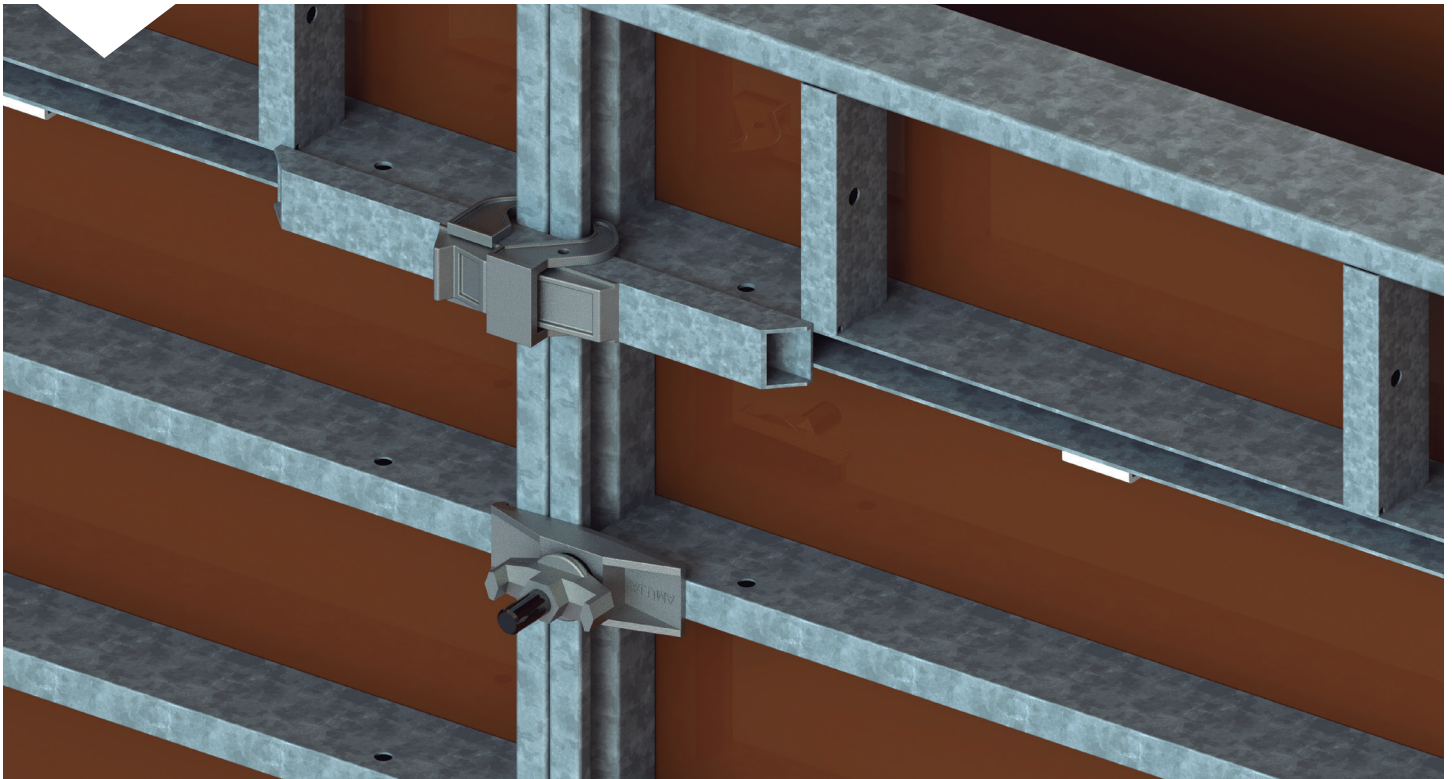
Galvanized panels for longer life and lower maintenance.

LOGIK[®] 60

Key Features

Flexible and easy tying

Detail showcasing the clamp and taper tie connection.



Robust panel frame – hot-dip galvanized for longer life



Multiple configurations that can be achieved using LOGIK 60, From clamping various sized forms.



Robust Panels

The range of LOGIK® 60 panel sizes and components allow for a multitude of arrangements. While integrating with Aluma Gang Forms you maximize the “best of both worlds” making the system ideal for a wide variety of situations. Panel sizes and orientation can be selected to achieve the right efficient dimensions.

LOGIK[®] 60

Technical Data

Product Description	Large Frame Wall Formwork
Panel Widths (cm)	30 45 60 90 120 240
Panel Heights (cm)	90 120 150 270 300
Profile Thickness	14 cm steel frame profile
Corrosion Protection	Hot-dip galvanized
Form Lining Types	Finnish Birch plywood with phenolic film face
Form Lining Thickness	18 mm plywood
Average Weight	65 kg/m ² (including accessory components)
Max. Concrete Pressure	80 kN/m ² (with 20 mm ties)
Relevant Standards	Meets ANSI A10.9, CAN/CSA S269.3-M92
Standard Connection	ALL clamps (aligning, levelling, and locking)
Special Features	<ul style="list-style-type: none">• Large sized panels• Stripping and hinged corners• Fast connecting crane grab• OSHA compliant safety tie off capability

► Logik[®] 60 Integrates with:

- Aluma Gang Forms with the Aluma Connector Rail
- Stud Form with the Aluma Connector Rail
- Logik[®] 360 Designed for complete system integration