

TOPEC **DH**

ADVANCED **DROPHEAD** DECKING SYSTEM

At Work For You™

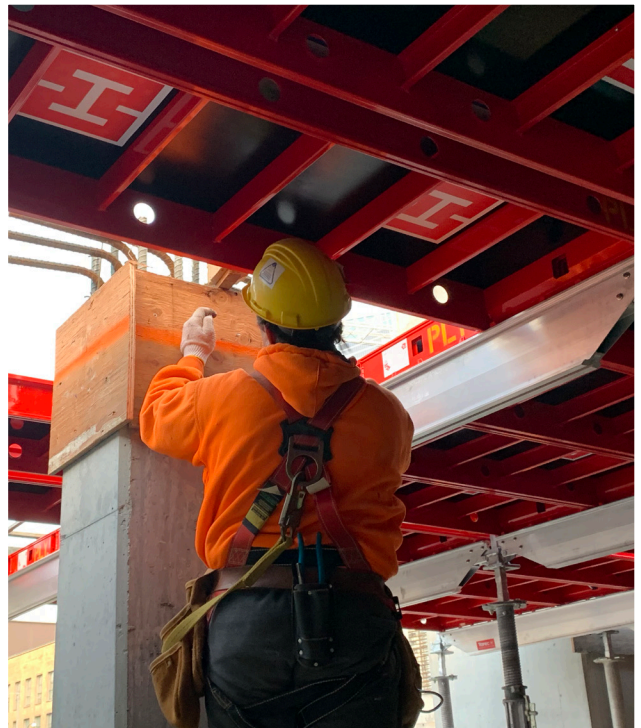


Aluma SYSTEMS

SGB

HUNNEBECK **H**

BY BRAND SAFWAY



Sugar Wharf | Toronto, Canada

TOPEC® **DH**

ADVANCED **DROPHEAD** DECKING SYSTEM

The evolution of this drophead system was a collaboration between site users, owners and our global team of engineers; that developed a premium decking system with features you value.



BRAND > **SAFWAY**™

Features & Benefits

TOPEC DH® | ADVANCED DROPHEAD DECKING SYSTEM

Safe

Positive engagement of all components during erection allows the erector to hear and feel components locking into place. Removes any doubt about whether any component is seated properly.

Easy

Maintenance is a breeze as most components can be replaced and serviced with simple hand tools.

Versatile

Good selection of accessories allows the system to adapt to any concrete geometry and adjacent shoring systems.

Effective

Without too many different components, sorting time is minimized and chance of using the wrong component are greatly reduced. This allows for quicker erection and dismantling of equipment on site with fewer shipping and erection errors.

Reusable

Materials in all components are carefully engineered and selected to maximize serviceable life.

Efficient

Minimal number of components ensures quick & easy erection, maximizing construction cycle times. Easy to service equipment means short turnaround time and reduces maintenance labour costs.

Sloping Capabilities

▶ Adaptable to any Geometry



Key Components

▶ Advanced Drophead Decking System

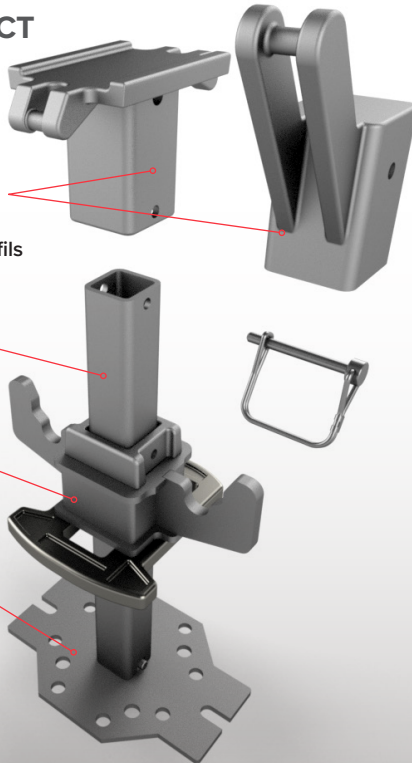
▶ QUICK-CONNECT DROPHEAD ASSEMBLY*

Removable Top Casting w/ Quick Release Pin when transitioning to edge fill or to lumber infiles

Locking Primary Beam Wings

180° Directional changing wedge for easier close to obstruction operation

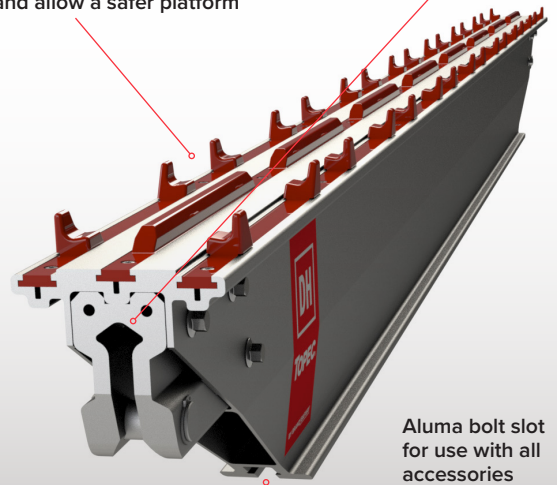
Universal Baseplate to fit most common props and shoring systems



▶ PRIMARY BEAM WITH ALIGNER TABS*

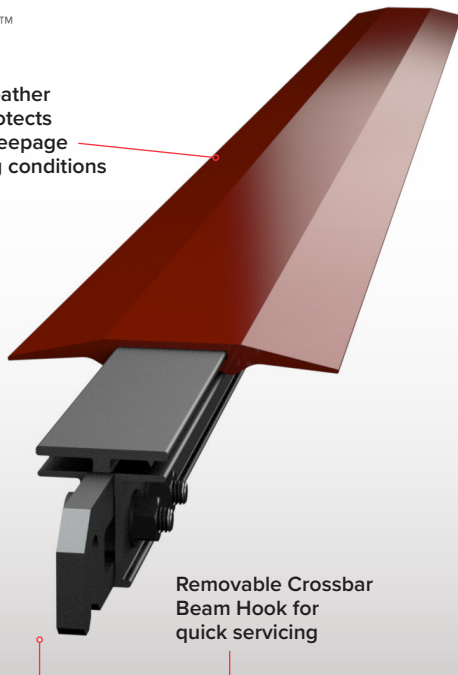
All weather, changeable Aligner Tabs lock the decking panels in place and allow a safer platform

Removable casted primary Beam End Bracket for quick service



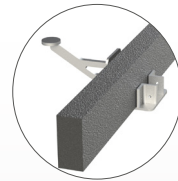
▶ CROSSBAR™ WITH RUBBER FLEX-STRIP™

Removable All-Weather Rubber Flange protects concrete "juice" seepage in all flat & sloping conditions



Removable Crossbar Beam Hook for quick servicing

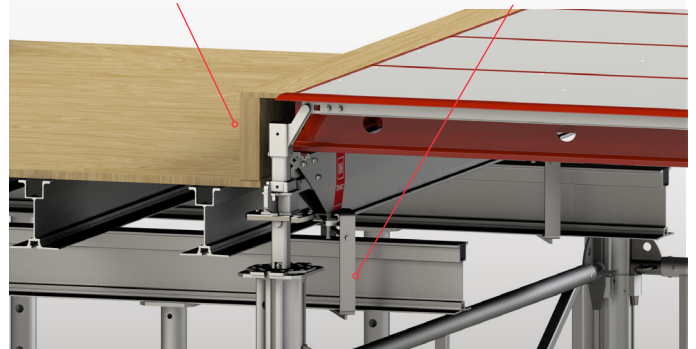
▶ SELECT ACCESSORIES FOR BETTER WORKFLOW



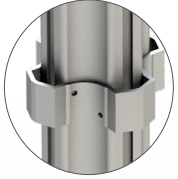
Timber / Composite Edge Beam Bracket



Twist-lock Beam Hanger (Under-Slung)



LIGHTSHORE™ ALUMINUM PROP

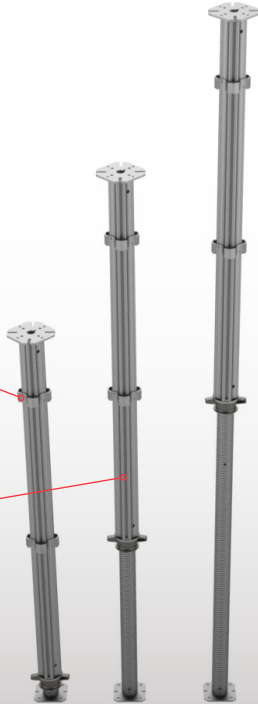


Quick Collar for speedy, single person installation with gates and tubular single brace

A Strong + Lightweight Prop

GASS® channel Profile for Interchangeable gates between the two systems

Inner leg can be placed at the bottom or top



QUICK TUBULAR BRACE* + GASS® GATES



Quick Tubular Brace is a 6' bar that a single person can quickly secure grid building a head of panels

Interchangeable GASS gates + Adjustable gate. 3' | 6' | 8' 6'6" Adjustable Gate

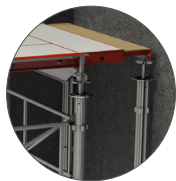


SMART PANELS SIZES FOR ALL CONFIGURATIONS

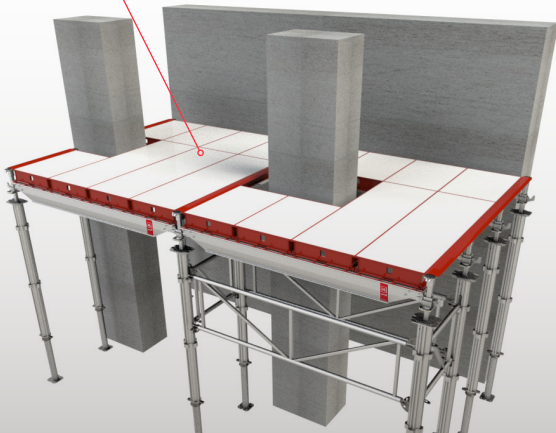
Utilizing 2 key panel sizes for various grid options:

2'x3' | 2'x6'

2'x6' Telescoping Panels.



Optional Telescoping Panel for infill situations



MANY SMART & SAFE FEATURES

This entire system has many optimized features to improve ergonomics, safety and efficiencies like the handles on the inside of our panels to prevent finger injury and reduce workers fatigue to the many engineered safety components.



Technical Specifications

▶ Advanced Drophead Decking System

Product Description	Crane-set large area wall formwork
Standard Panel Sizes	2' x 6' (600 x 1800 mm) 2' x 3' (600 x 900 mm)
Primary Beam Lengths	8' (2400 mm) 6' (1800 mm)
Gird Sizes	8' x 6' (2485 x 1800 mm) maximum grid size 6x8, 3x8, 6x6, 3x6
Form Lining Type	11 mm plastic facesheet
Capacity / Slab Thickness	18" (460 mm) Slab for maximum grid size
Corrosion Protection	Galvanized steel components
Standard Shoring	Lightshore™ aluminum props
High Capacity Shoring	GASS® aluminum props
Slope Capabilities	5° in all directions



Key Features

▶ Advanced Drophead Decking System

TOPEC **DH**
ADVANCED DROPHEAD DECKING SYSTEM

The features and performance of Topec DH[®] was engineered with the on-site end users in mind, delivering optimal performance, safety and efficiencies; while providing the key stakeholders of your business those same profit saving benefits.



Key Features

▶ Larger 6'x8' Grid



Utilizes standard light-weight 2'x6' panels to achieve the ideal 6 x 8' grid, saving you 25% on post shores.

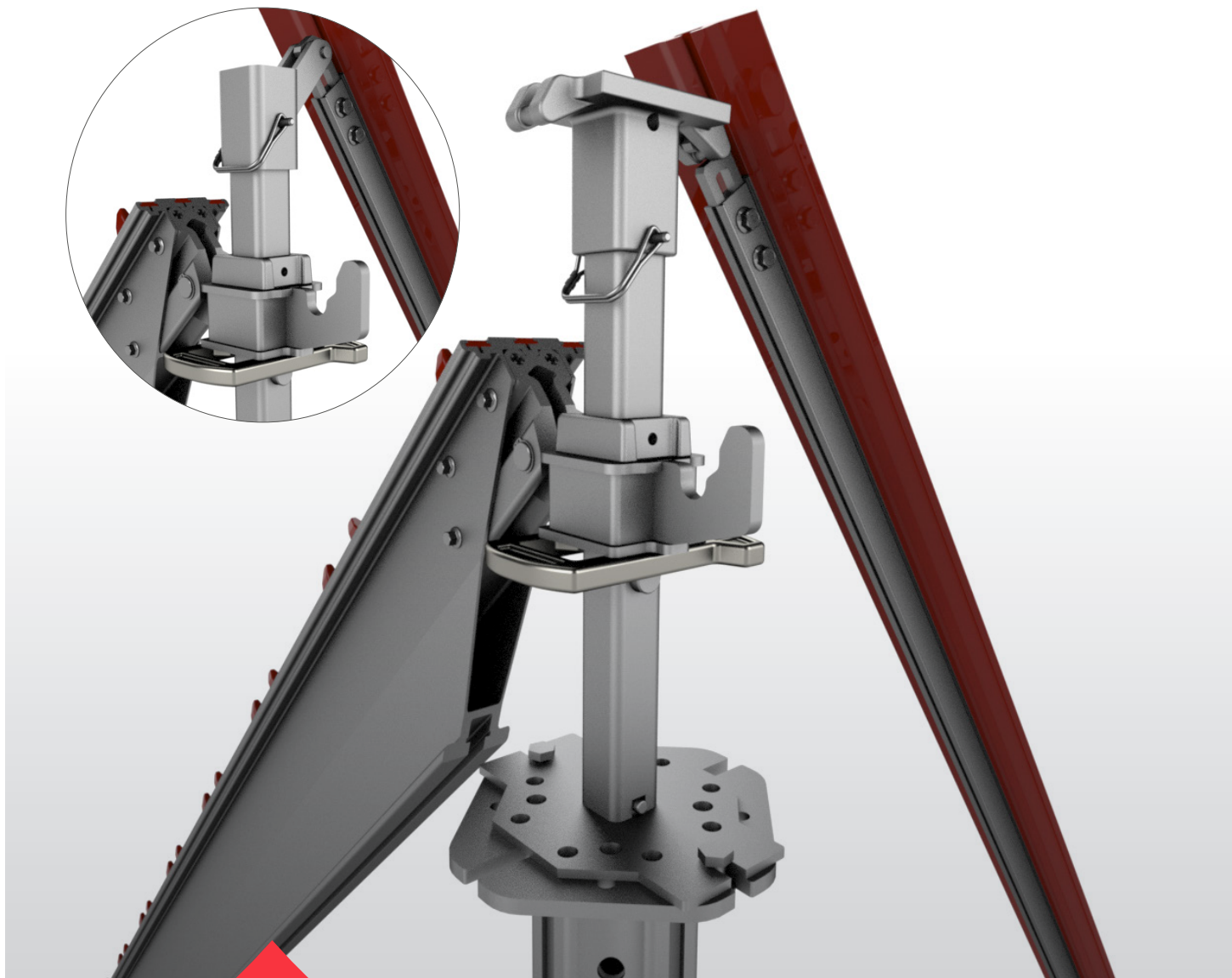
Larger grid size save on props

Less ledger frames

Individual panels are easier to handle and configure

Key Features

▶ Quick Connect DropHead®



Fits full range of Post shores with a quick service & minimal maintenance design. Design allows beams to quickly hook directly onto it.

1. Wedge rotate while against a wall for easy striking / stripping
2. Standard Top Casting is easily swapped out at infill locations for the Infill Casting.
3. Crossbar and Primary Beam hinges down from the Drophead without risk of popping out
3. Universal Fit, Quick clip locking mechanism
4. Drophead positively engages the the primary beam to securely lock the beam in place
5. Drophead when dropped allows for removal of panes to slide over the primary for stripping on any grid configuration

Key Features

▶ Aluminum Prop with Quick Collar™



Light weight & robust prop is fitted with quick attach ledger frame components so you can safely work ahead before dropping in panels

1. **Quick wedge** (locking barrel w/hook) allows for easy single person install, ledger frames can be hooked on with the **wedge collar** without striking. once all gates are in, striking can take place to secure further (competitors systems requires 1 person to hold gate while the other strikes to lock)
2. Allows for locking barrel to be installed in any point along the LiteShore or GASS prop for various onsite slope configurations.
3. Reversible inner leg to allow adjustments below or at the drophead

Key Features

▶ Crossbar™ with Flex-Strip

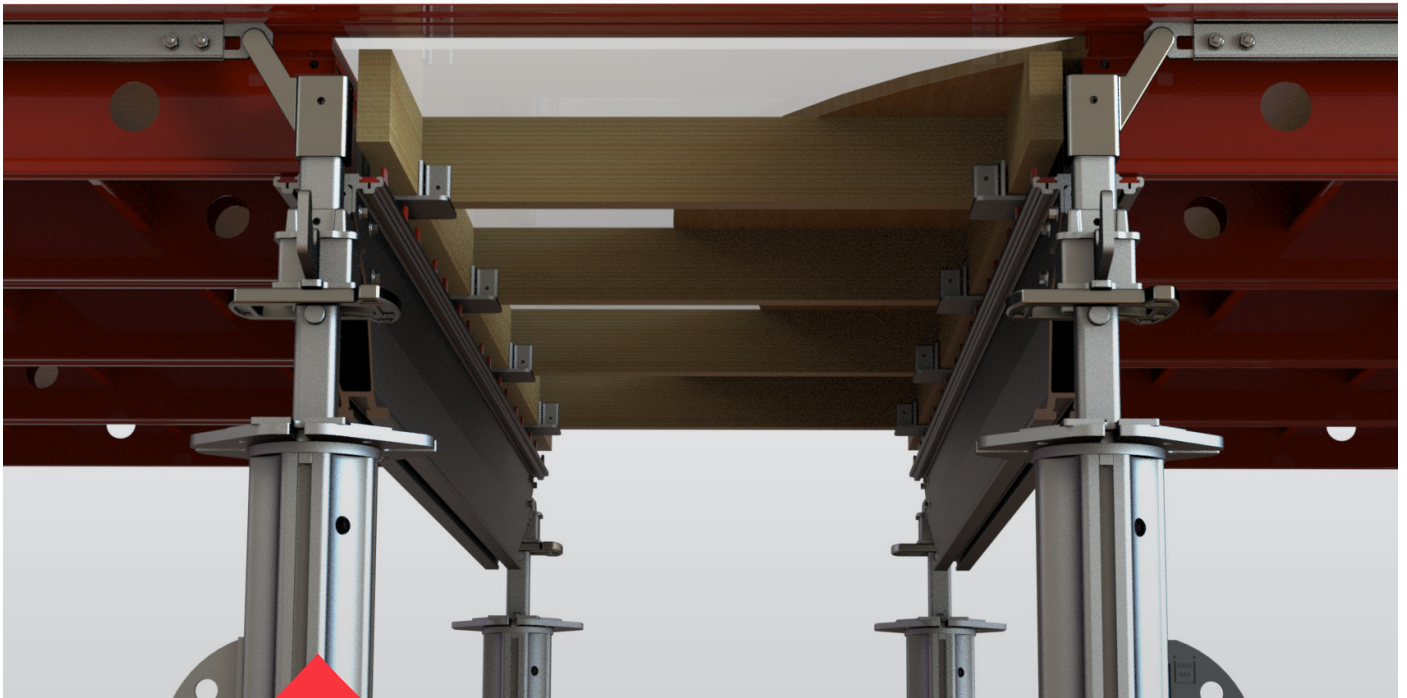
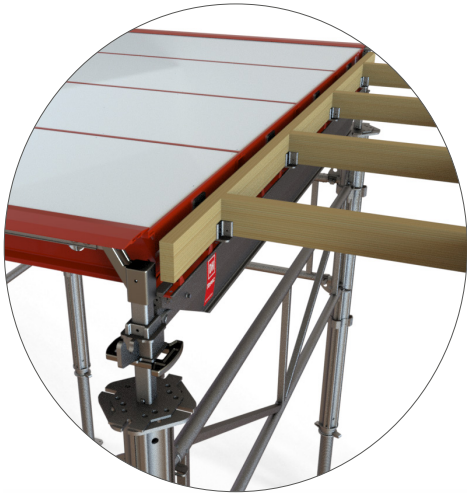


**Easy to install
Crossbar™ with all
weather flexibility,
ensuring proper
gap coverage in all
sloping and flat grid
configurations.**

1. The crossbar is not required for stability, in fact it gets placed after (during) the panels are installed. Rubber tempered for all environments allows the system to slope in all geometric conditions and protect the leakage of concrete...
2. lightweight and easy to handle and safe component for install and stripping. rubber long life life span can be easily replaced if required

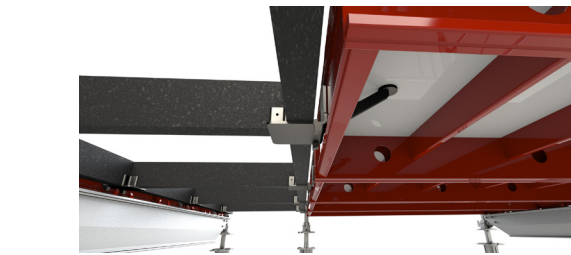
Key Features

▶ Timber Holder™ and Composite Edge Beam



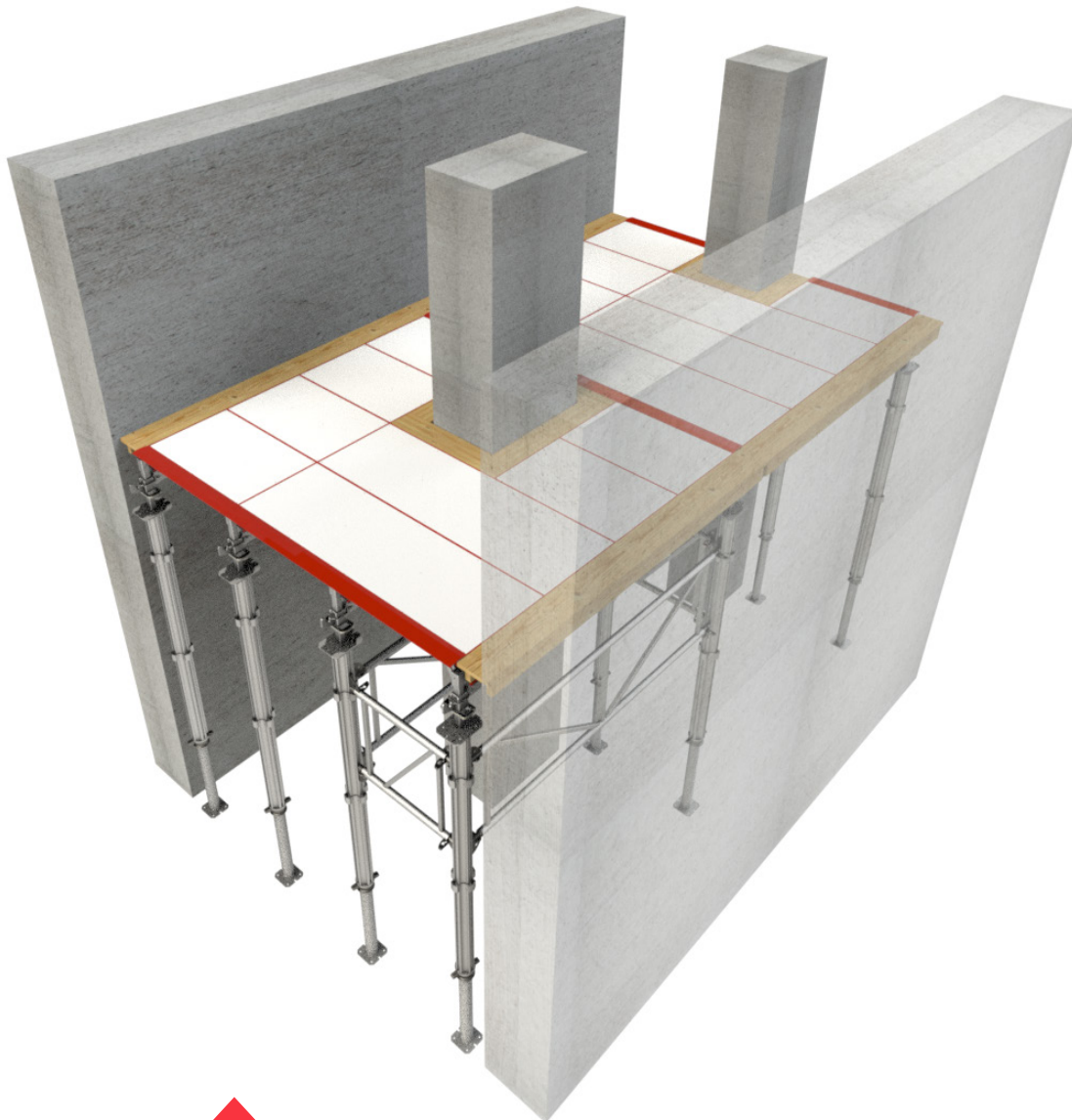
Light weight & robust prop is fitted with quick attach ledger frame components so you can safely work ahead before dropping in panels

1. Infill can quickly be formed with standard lumber or the composite bar with our universal timber holder (infill bracket?)
2. Under-slung beam hanger allows for standard beam or stringers to be placed and span for quick infill builds with minimal components
3. Cantilever bracket allows for additional accessories for other beam drops or other infill application configurations



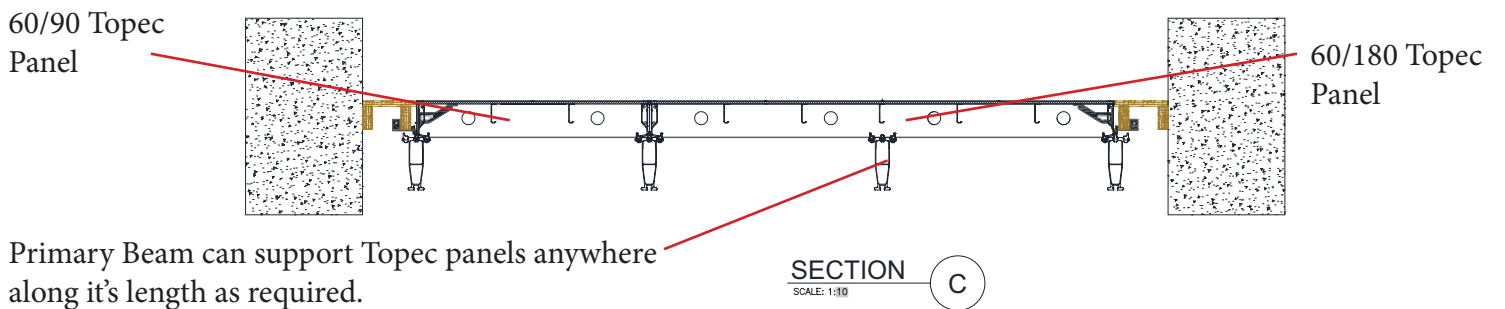
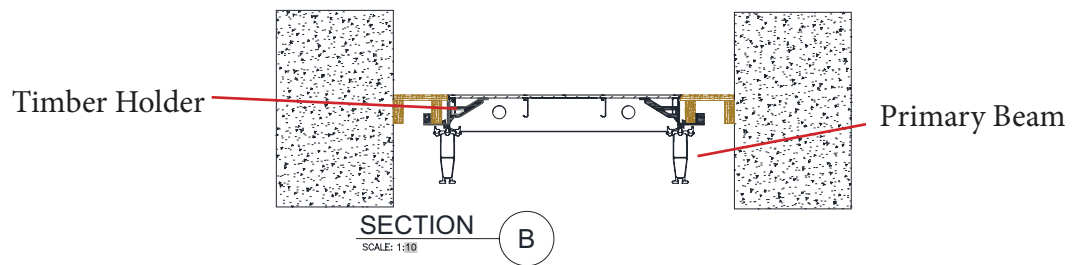
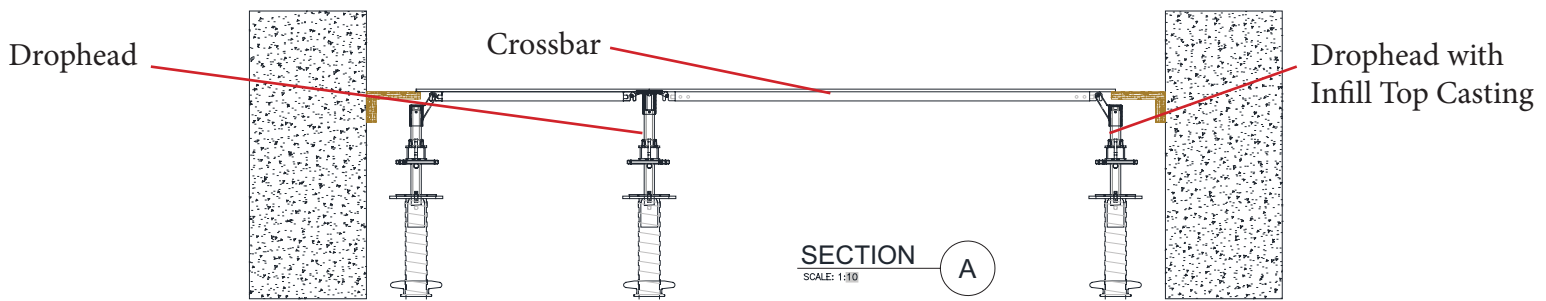
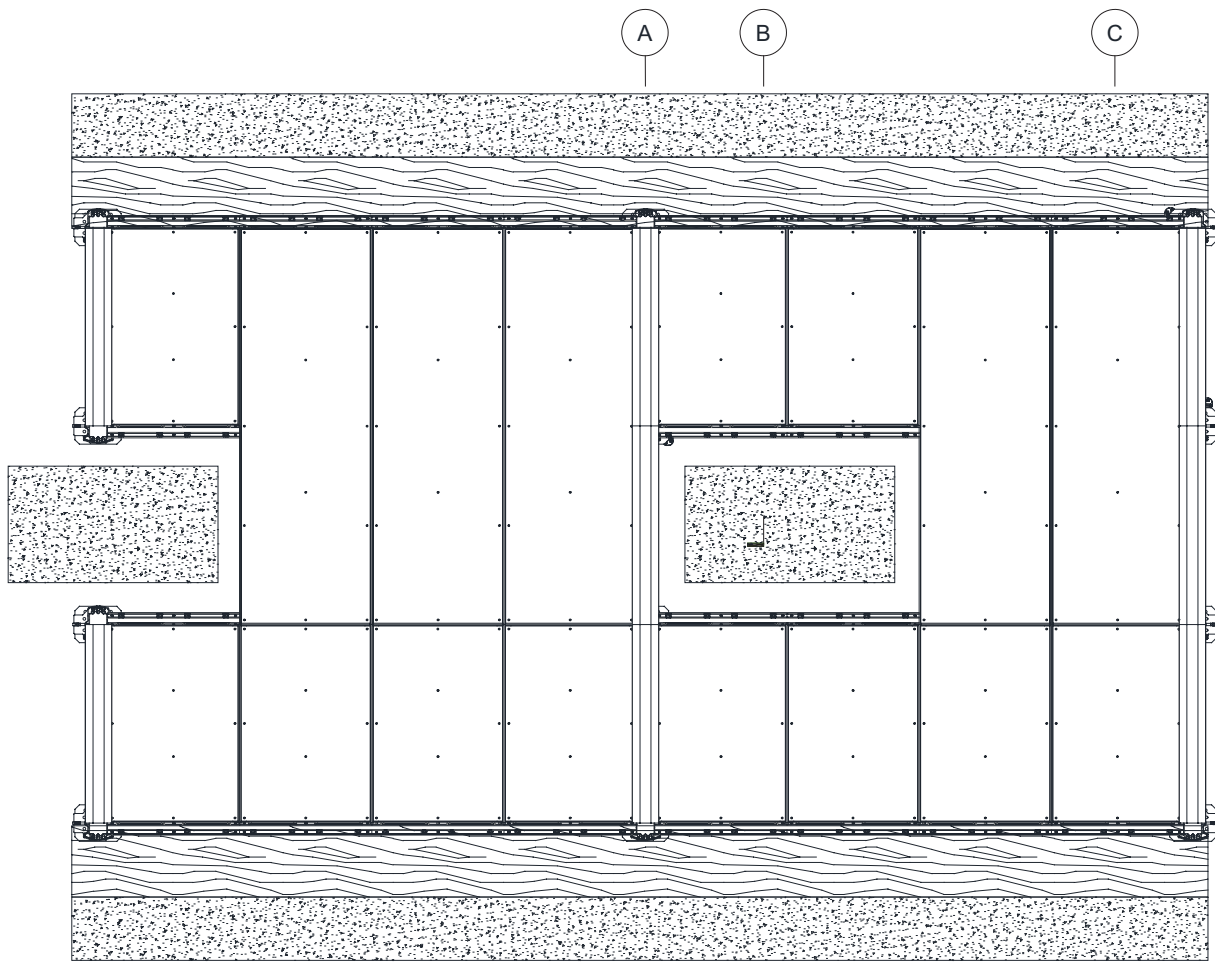
Key Features

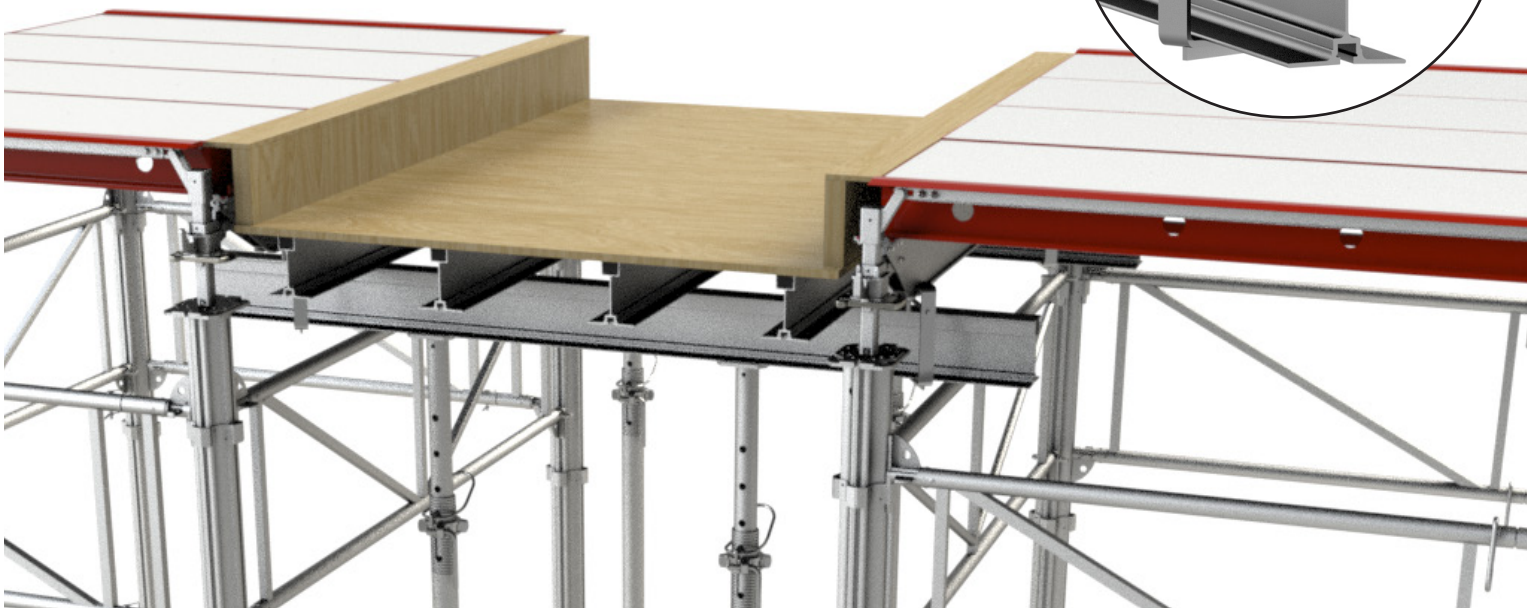
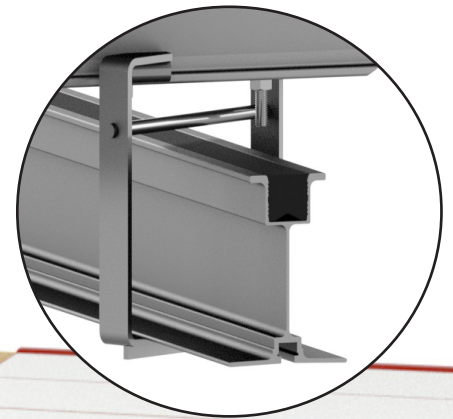
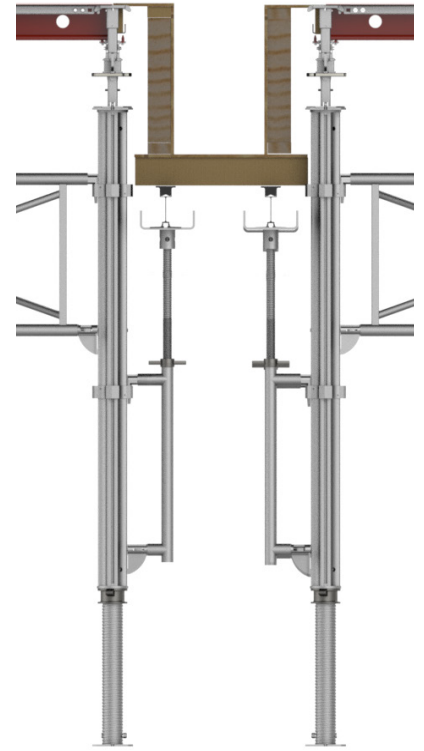
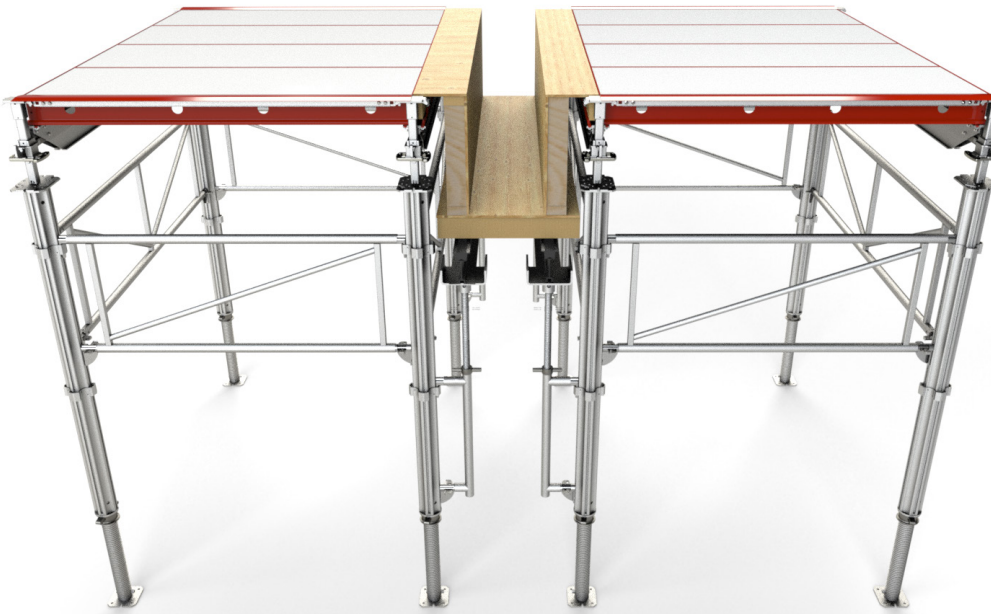
▶ Adaptable for all infills and drops

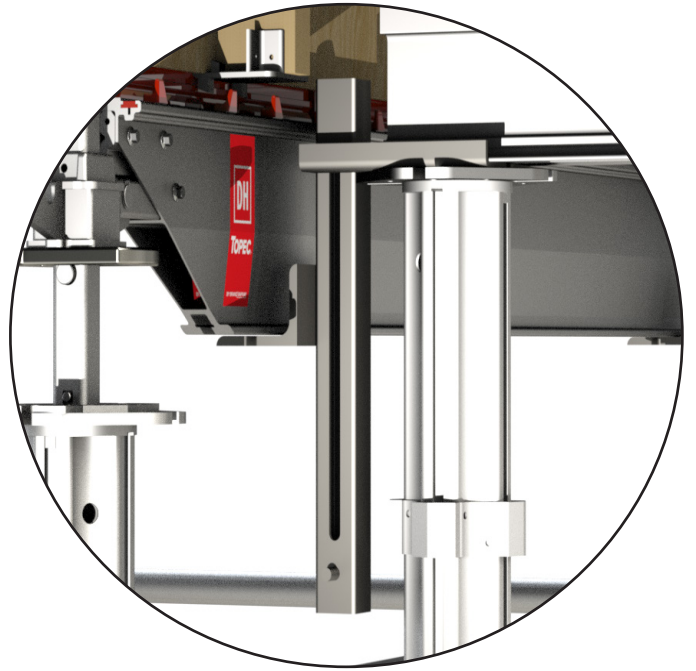


Utilizing minimal yet effective accessories for fast infills & drops as well as integrated Aluma Bolt slot for complete flexibility within our portfolio.

1. Infill can quickly be formed with standard lumber or the composite bar with our universal timber holder (infill bracket?)
2. Under-slung beam hanger allows for standard beam or stringers to be placed and span for quick infill builds with minimal components
3. Cantilever bracket allows for additional accessories for other beam drops or other infill application configurations







Key Features

▶ Safety Integration & Accessories

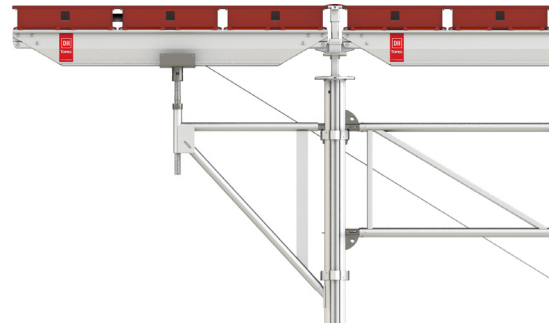
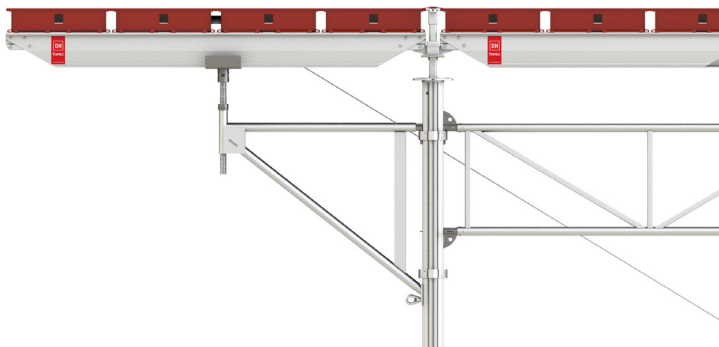


System is designed to work with various common engineered edge protection fence system for a safer and more integrated system.

Panel Tie Down

Tube installed through two adjacent panels. It's fixed in with the supplied clevis pin. Bracket is then strapped to the Outer Leg Ring Bolt Safety Latch or strapped to the ground.

1. Available standard secure brackets (clamp and long locking panel tie down bracket) to securely support modern engineered edge protection.
2. For timber edge protection option a guard rail post can be installed on the brackets



USA

Atlanta, GA
T 404.699.0979

St. Charles, IL
T 847.838.4366

Fontana, CA
T 909.440.0051

Sacramento, CA
T 530.662.5245

Tampa, FL
T 813.626.1133

Houston, TX
T 281.860.1900

Baltimore, MD
T 301.937.5090

Seattle, WA
T 425.251.0270

Linden, NJ
T 732.396.1269

Gilberts, IL
T 847.426.4400

Las Vegas, NV
T 773.617.9657

CANADA

Toronto, ON
T 905.669.5282

Calgary, AB
T 403.259.2600

Bolton, ON
T 905.857.8562

Coquitlam, BC
T 604.472.8000

Montreal, QC
T 514.383.1985

Sidney, BC
T 250.652.9409

Edmonton, AB
T 780.440.1320

Aluma.com

Photos and diagrams are illustrative only. All products and equipment shall be used or offered for sale only where permitted by law or governmental regulations, codes or ordinances and shall be used in strict conformity therewith and for the purposes and in the manner as may be prescribed therein and in conformity with safe practice. Specifications of products and equipment shown herein are subject to change without notice.

Serious injury may result if you fail to use safe practice in the erecting, dismantling or use of mast climbing work platforms, scaffolding, shoring and/or forming equipment. Erectors, dismantlers and users must be familiar with and follow current laws and regulations, safe practice and the Safety Rules and Instructions. Individuals using this equipment must be instructed in these requirements. Safety Rules and Instructions pertaining to the products shown herein are provided upon sale or rental of equipment. Additional copies or further information shall be provided upon the customer's request. It is important to note that current OSHA regulations require the use of guardrail systems and/or fall-protection devices at all working levels, open sides, and at all other openings on platforms and work areas above certain heights, as specified by OSHA. In all cases, where a worker is exposed to a fall hazard in the use of this equipment, guardrail systems, where appropriate, or other personal fall-protection devices, must be utilized. Means of access must be made available by the customer to all locations where people are expected to work. Materials for the provision of such means of access may be job-built by the customer or, at the customer's option, be obtained through Aluma Systems or other suppliers. Aluma Systems will, at the customer's request, consult on an alternative means of access.